



PT HUME SAKTI INDONESIA
PRESTRESSED SPUN POLES & PILES - PILING
AND OTHER CONCRETE PRODUCTS MANUFACTURERS



“Tepat Mutu, Tepat Guna, Tepat Waktu”





PT HUME SAKTI INDONESIA

PRESTRESSED SPUN POLES - PILES - PILING
AND OTHER CONCRETE PRODUCTS MANUFACTURER

INTRO

Sejak tahun 1983, PT Hume Sakti Indonesia (HSI) telah memenuhi kebutuhan produk beton konstruksi di berbagai proyek di Indonesia. Dengan berbekal pengalaman selama lebih dari 30 tahun, HSI siap menyajikan produk beton dan jasa konstruksi yang berkualitas untuk memenuhi segala kebutuhan proyek anda.

► SERTIFIKASI PABRIK

- SUCOFINDO INTERNATIONAL CERTIFICATION SERVICES (SICS)
SNI ISO 9001 : 2008



MARKETING OFFICE

Head Office

Jl. Gajah Mada 156
Jakarta 11130
Telp : (021) 629- 5678 / 6399- 508
Fax : (021) 630- 2047

Branch Office

Jl. Manyar Kertoarjo V/42
Surabaya
Telp : (031) 594- 6787- 8
Fax : (031) 594- 6786

FACTORIES

Jl. Raya Cakung Cilincing Kav 16,17
Jakarta Timur
Telp : (021) 460- 0280
Fax : (021) 460- 0279

Jl. Mojosari- Krian KM 2
Mojosari , Mojokerto
Telp : (0321) 591- 323
Fax : (0321) 591- 322

PC SPUN POLE



SPEKIFIKASI STANDAR

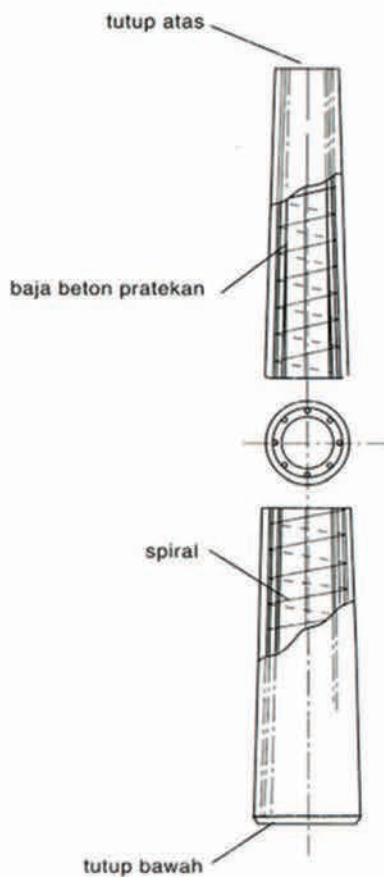
- JIS A 5039
- SPLN D3.019- 2 : 2013
- STEEL- 2001

KEGUNAAN

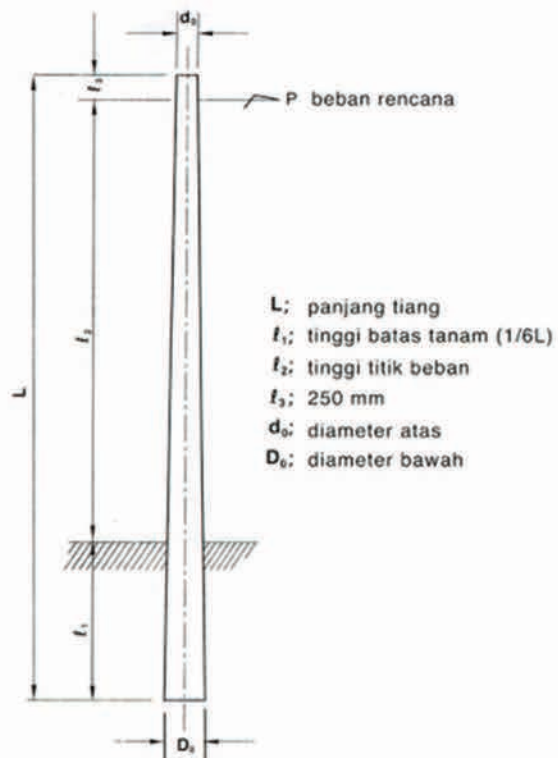
- Tiang Listrik Rel
- Tiang Transmisi
- Tiang Listrik
- Tiang Telepon
- Tiang Antena

PC SPUN POLE

Panjang (M)	Diameter Atas (cm)	Diameter Bawah (cm)	Beban Rencana (kg)
7	12.4	21.7	100
7	14.0	23.3	100
7	14.0	23.3	200
9	15.7	27.7/25.7	100
9	15.7	27.7/25.7	200
9	17.0	29.0	200
9	19.0	31.0	350
9	19.0	31.0	500
9	22.0	34.0	800
11	19.0	33.7	200
11	19.0	33.7	350
11	19.0	33.7	500
11	22.0	36.7	800
11	22.0	36.7	1.200
12	19.0	35.0	200
12	19.0	35.0	350
13	19.0	36.3	350
13	19.0	36.3	500
13	22.0	39.3	800
13	22.0	39.3	1.200
14	19.0	37.7	350
14	19.0	37.7	500



Struktur Tiang Beton



Dimensi Tiang Beton

PC SPUN PILE



SPEKIFIKASI STANDAR

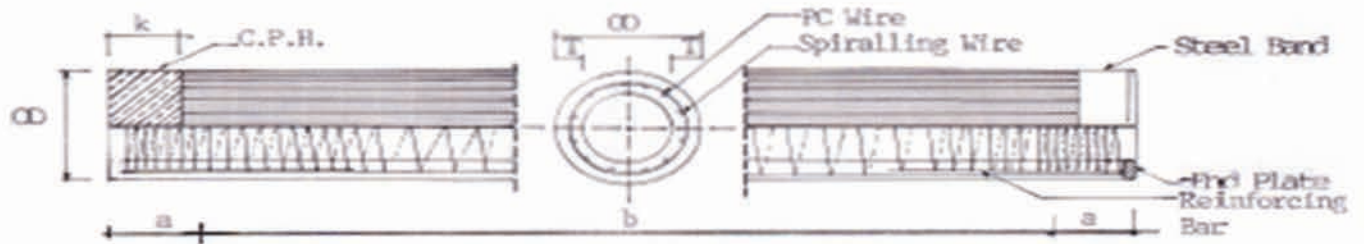
- JIS A 5335-1987
- ACI 543- 00
- SNI 03-2847-2002

KEGUNAAN

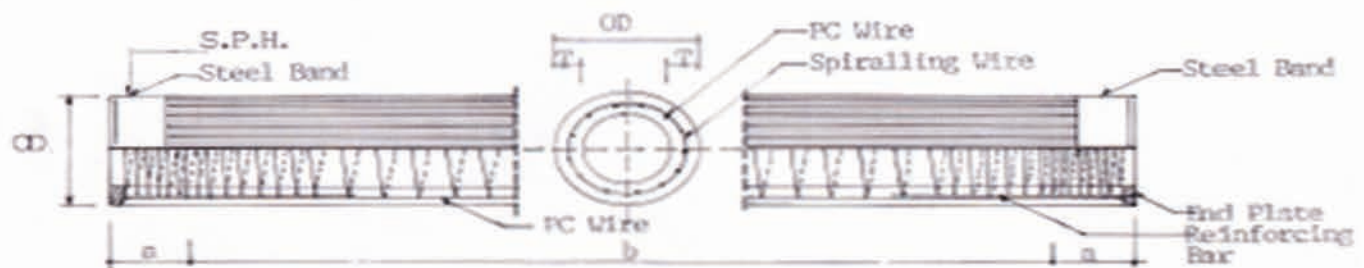
- Menahan Beban Struktur
- Menahan Beban Gempa

PC SPUN PILE

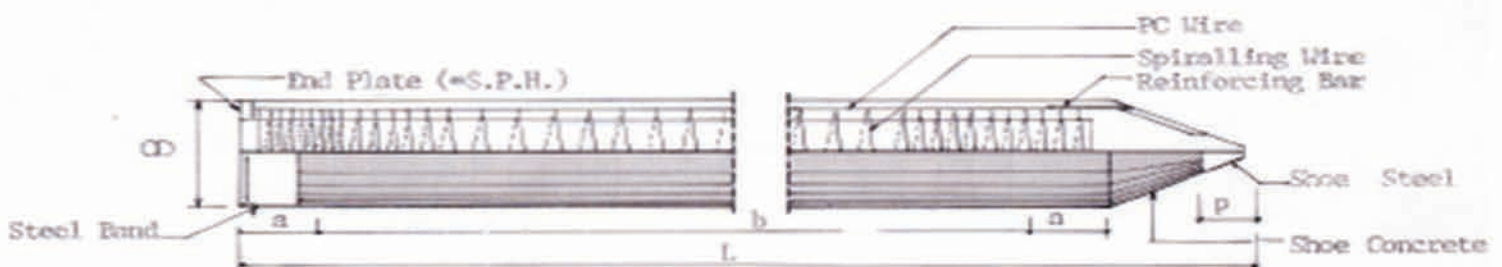
OUTER DIAMETER	WALL THICKNESS (mm)	LENGTH (m)	CLASS	PC WIRE		CONCRETE AREA (cm ²)	CALCULATED BENDING MOMENT (T.M)		ALLOWABLE AXIAL LOAD (TON)	NOMINAL WEIGHT (kg/M)
				DIA (mm)	NOS		CRACK	ULT		
300	60	7-13	A	7	6	452	2.5	4.7	75	119
			B	7	12		3.5	7.0	70	
			C	7	16		4.0	9.0	65	
350	65	7-15	A	7	8	582	3.5	6.9	95	151
			B	7	14		5.0	9.6	90	
			C	7	20		6.0	13.5	85	
400	75	7-16	A	7	10	766	5.5	9.4	120	199
			B	7	18		7.5	14.2	115	
			C	9	16		9.0	18.9	112	
450	80	7-16	A	7	12	930	7.5	12.4	150	242
			B	7	24		11.0	21.3	140	
			C	9	20		12.5	26.0	135	
500	90	7-16	A	7	14	1159	10.5	15.7	185	301
			B	7	30		15.0	29.5	175	
			C	9	24		17.0	35.1	170	
600	100	7-16	A	7	18	1571	17.0	23.6	250	408
			B	9	26		25.0	46.2	240	
			C	9	34		29.0	60.2	230	



UPPER PILE



UPPER PILE



LOWER PILE

PC SQUARE PILE



SPESIFIKASI STANDAR

- ACI 543R
- NI 2 PBI- 1971

KEGUNAAN

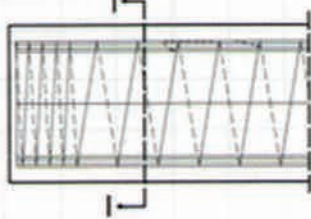
- Menahan Beban Struktur
- Menahan Beban Gempa



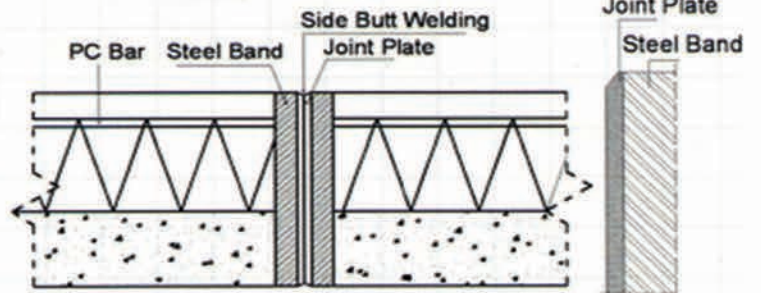
PC SQUARE PILE

PILE SIZE (CM)	MOMENT (ton-m)		AXIAL LOAD (ton)	CONCRETE AREA (cm ²)	WEIGHT (kg/m')
	M.Crack	M.Ult			
30x30	5	8,6	112	900	225
40x40	9,1	14,1	209	1600	400
45x45	15,7	25,9	335	2025	506
50x50	22,4	39,6	315	2500	625

DETAIL A



DETAIL B



STIRRUP

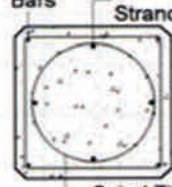
PC. BAR



EXTRA BARS

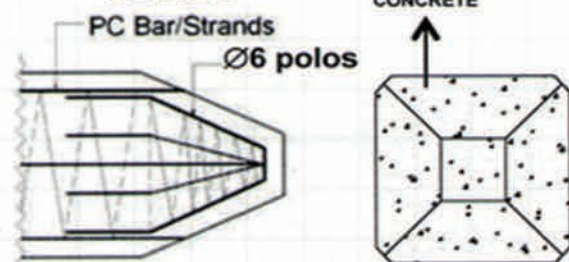
Bars

PC Bars / Strands



Spiral Ties

DETAIL C



CROSS SECTION I - I
(MINI PILE)
20X20 & 25X25

CROSS SECTION I - I
(SQUARE PILE)
30X30 to 50X50

A

B

C



FLAT CONCRETE SHEET PILE



SPESIFIKASI STANDAR

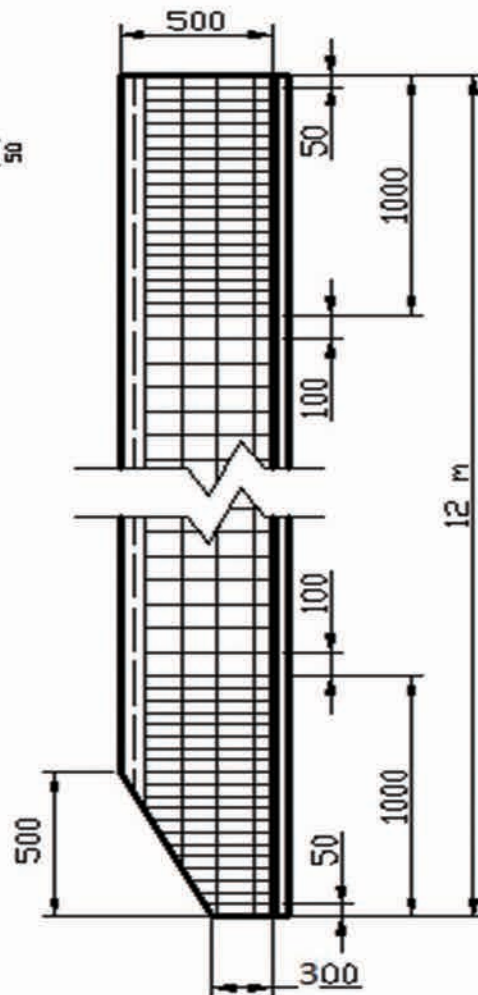
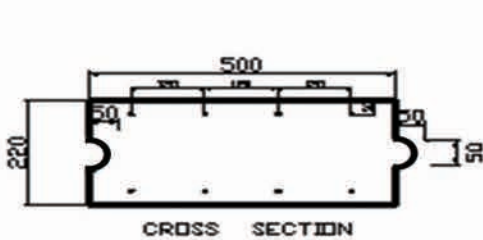
- ASTM C33- 1999
- NI 2 PBI - 1971

KEGUNAAN

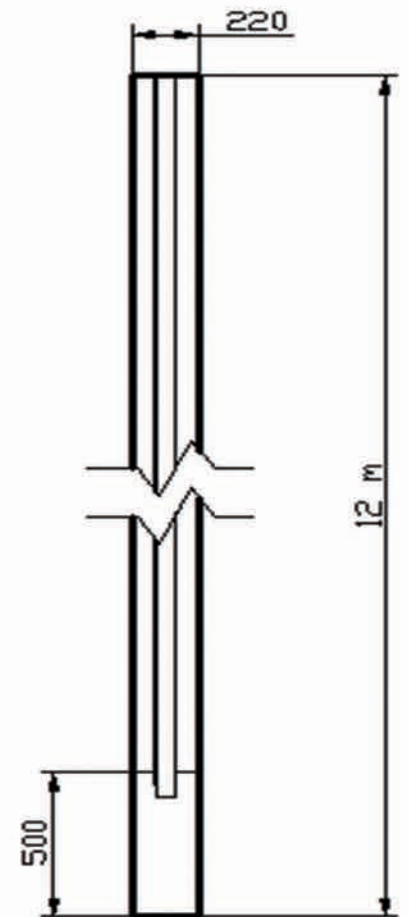
- Struktur Pelabuhan
- Dinding Sisi Sungai
- Struktur Penahan Tanah
- Dll

FLAT CONCRETE SHEET PILE

FS PILE (mm)	MOMENT (ton-m)		HEIGHT (mm)	WEIGHT (kg/m)
	M.Crack	M.Ult		
FS 220 Class A	3	5,3	220	275
FS 220 Class B	5,3	9	220	275



FRONT VIEW



SIDE VIEW

INJECTION SYSTEM (PILING)



KEUNGGULAN HYDRAULIC INJECTION PILING HSI

- **BEBAS SUARA**
Tidak menimbulkan suara yang mengganggu saat proses pemancangan
- **BEBAS POLUSI**
Tidak mengeluarkan polusi berupa asap yang berbahaya
- **BEBAS GETARAN**
Tidak menimbulkan getaran yang bisa merusak bangunan sekitar

HSI

INJECTION SYSTEM (PILING)

Parameter / Model		ZYC 120	ZYC 240	ZYC 320	ZYC 420	ZYC 600
Rate piling pressure(KN)		1200	2400	3200	4200	6000
Piling speed(m/min)	Fast	10	7.7	7.1	8.6	7
	Low	3	1.8	1.9	1.7	1.4
Piling stroke(m)		1.6	2	1.9	1.9	1.9
Pace(m)	Longitudinal	1.6	3.3	3.6	3.6	3.6
	Horizontal	0.5	0.6	0.7	0.7	0.7
Angle range(°)		15	15	11	11	11
Rise stroke(m)		0.8	1	1	1.1	1.2
Square pile(m)	Max	0.35	0.45	0.55	0.55	0.55
Circle pile(m)	Max	0.3	0.5	0.6	0.6	0.6
Side piling(m)		0.72	0.95	1.25	1.25	1.25
Corner piling space(m)		1.5	1.9	2.5	2.5	2.5
Lifting weight(t)		8	12	12	12	16
Pile hanging length(m)		12	14	14	14	15
Power(KW)	Piling	37	60	74	111	111
	Lifting	22	30	30	30	30
Main dimension(m)	Work Length	9.45	11.3	12.5	13	13.5
	Work Width	5.2	6.3	7	7.2	8.08
	Transpot Height	2.9	3	3	3.05	3.15
Total weight(t)		120	240	320	400	600

CAPACITY of OUR PILING MACHINES

- 120T
- 240T
- 320T
- 420T
- 525T
- 600T





Contact Us

Head Office

Jl. Gajah Mada 156
Jakarta 11130
Telp : (021) 629 - 5678 / 6399-508
Fax : (021) 630-2047
Fax : (021) 639-9517

Branch Office

Jl. Manyar Kertoarjo V/42
Surabaya
Telp : (031) 594-6787
Fax : (031) 594-6786

Factory

Jl. Raya Cakung Cilincing Kav. 16,17
Jakarta Timur
Telp : (021) 460-0280
Fax : (021) 460-0279

Jl. Mojosari - Krian KM 2
Mojosari, Mojokerto
Telp : (0321) 591-323 / 591-324
Fax : (0321) 591-322